

● May 2008



## Our action



We have recently created an association called "les Citoyens de l'Europe" (The citizens of Europe).

Its goal is to call up citizens in different European countries so as to support an action in favor of the reforestation of places devastated by forest fires in Greece last summer. Thus, we hope to extend the action undertaken by "Un arbre pour la Grèce" (A tree for Greece) to the rest of Europe.

In addition, to raise our chances of success, "l'Elan Nouveau des Citoyens", another association which gave birth to the action "Un arbre pour la Grèce" will actively take part in our project. Therefore, there will be interconnections between all the people working in the same direction.

« Grâce à la jeunesse, c'est bien plus que des arbres qui seront plantés en Grèce, ce sont les fondements d'une Europe issue de l'amour des Peuples. »

Emmanuel Vasseneix

To mobilize the European citizens, we have imagined a project based on essential values such as solidarity, courage and enthusiasm. For our project to reach as many European citizens as possible, we will ride through major European cities. We will start our cycling raid from Lille (North of France) then will ride through Belgium, Luxemburg, Germany, Austria, Italy and Greece.

Our action is rich in symbols because sport will carry the values that are deeply attached to the Olympic spirit, so dear to Greece.

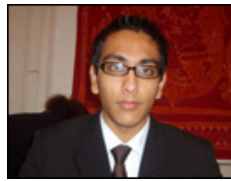
This project can not only sensitize citizens to the action of "un arbre pour la grèce" and entice them to help with the reforestation of this beautiful country.

Moreover, it will also be an opportunity to show that, thanks to simple gestures, the Europe of brotherhood between peoples can become reality.

*Because we aspire to reinforce Europe of citizens, united around the values of mutual aid and solidarity.*



The actors



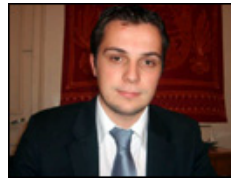
**Harsh Doshi**

President



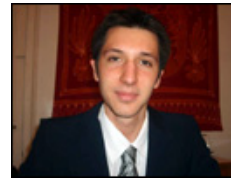
**Romain Renuy**

Assistant treasurer



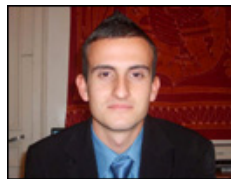
**Julien Druelle**

Vice-president



**Guillaume Bouton**

Secretary



**Christophe Gonçalves**

Treasurer



**David Gugenheim**

Participant

Our partners



Un arbre pour la Grèce



manifeste



Contact

Les Citoyens de l'Europe

50, rue de Valmy  
59000 LILLE

(0033)6 85 38 82 85  
(0033)6 70 80 63 31

lescitoyensdeleurope@  
yahoo.fr

Our support



**Jean-Marie Leblanc**

Last Director of  
Tour de France



**Gontran Lejeune**

Member of  
C.J.D. Office



**Yannick Richomme**

President of Tetra  
Pak France



**Philippe Rodet**

President of L'Elan  
Nouveau des  
Citoyens



**Christian Sergheraert**

President of Lille 2  
University



**Emmanuel Vasseneix**

Member of  
C.J.D. Office

They are supporting the action

Un arbre pour la Grèce



**S.E.M. Georges Anastassopoulos**  
President of Gen. Conf.  
of UNESCO



**Theodoros Kassimis**  
Vice-Minister of Foreign  
Affairs



**S.E.M. Dimitrios Paraskevopoulos**  
Ambassador of Greece  
in France



**Jacqueline de Romilly**  
French Academy



**Niki Goulandris**  
Chairwoman of Natural  
History Museum in  
Athens



**Nikos Aliagas**  
TV Journalist



**Stéphane Bern**  
TV Journalist